

NorthBelt Office Center V



- Remaining space now divisible
- Available Immediately: 12,080 SF to 27,784 SF



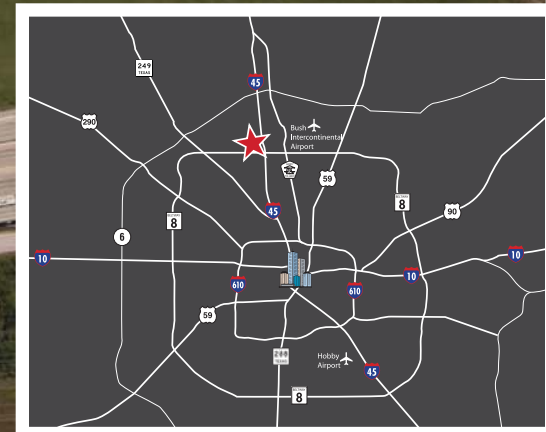
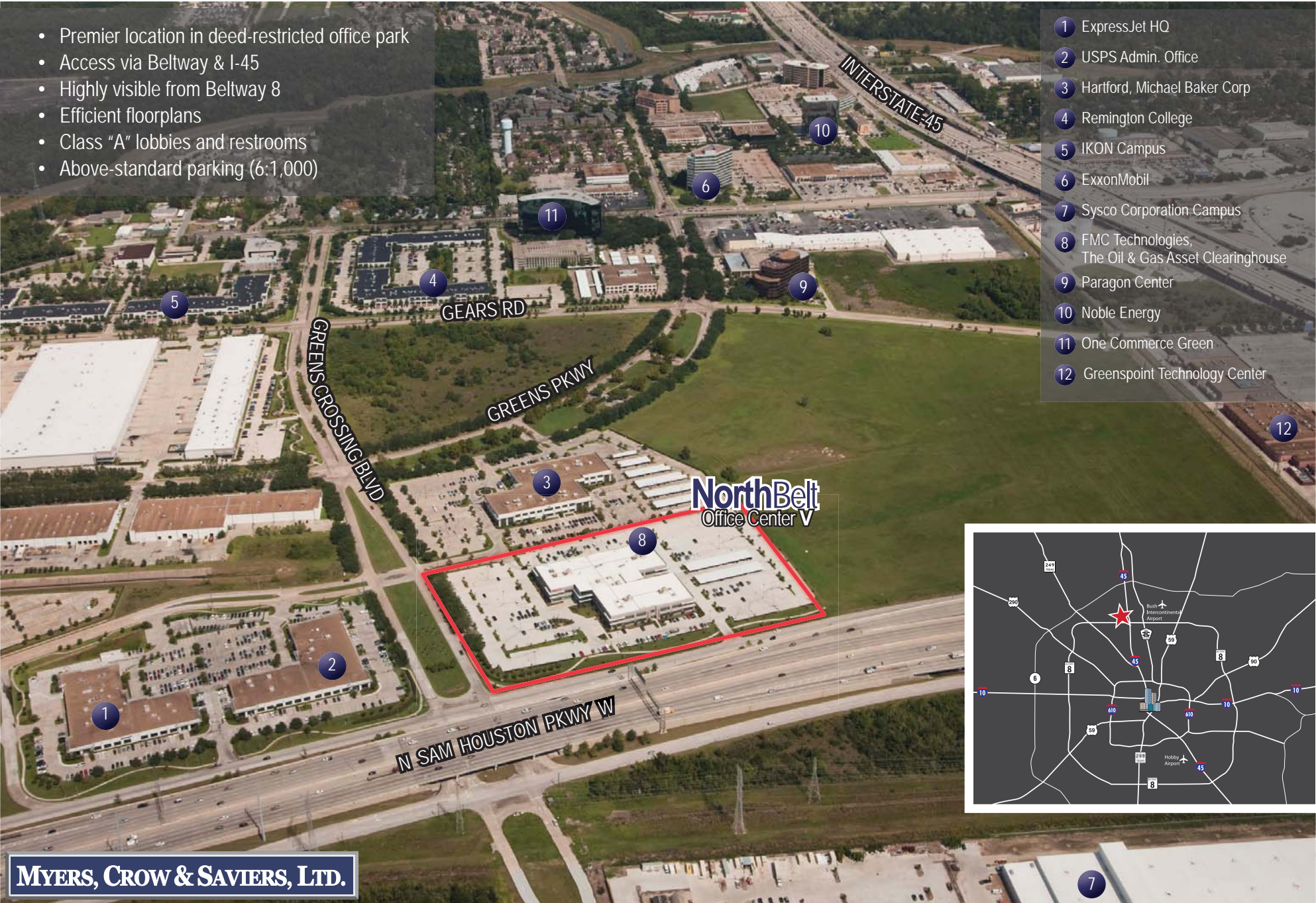
For more information, please visit:
www.myerscrow.com/Houston/Northbelt_V/northbelt_V.htm

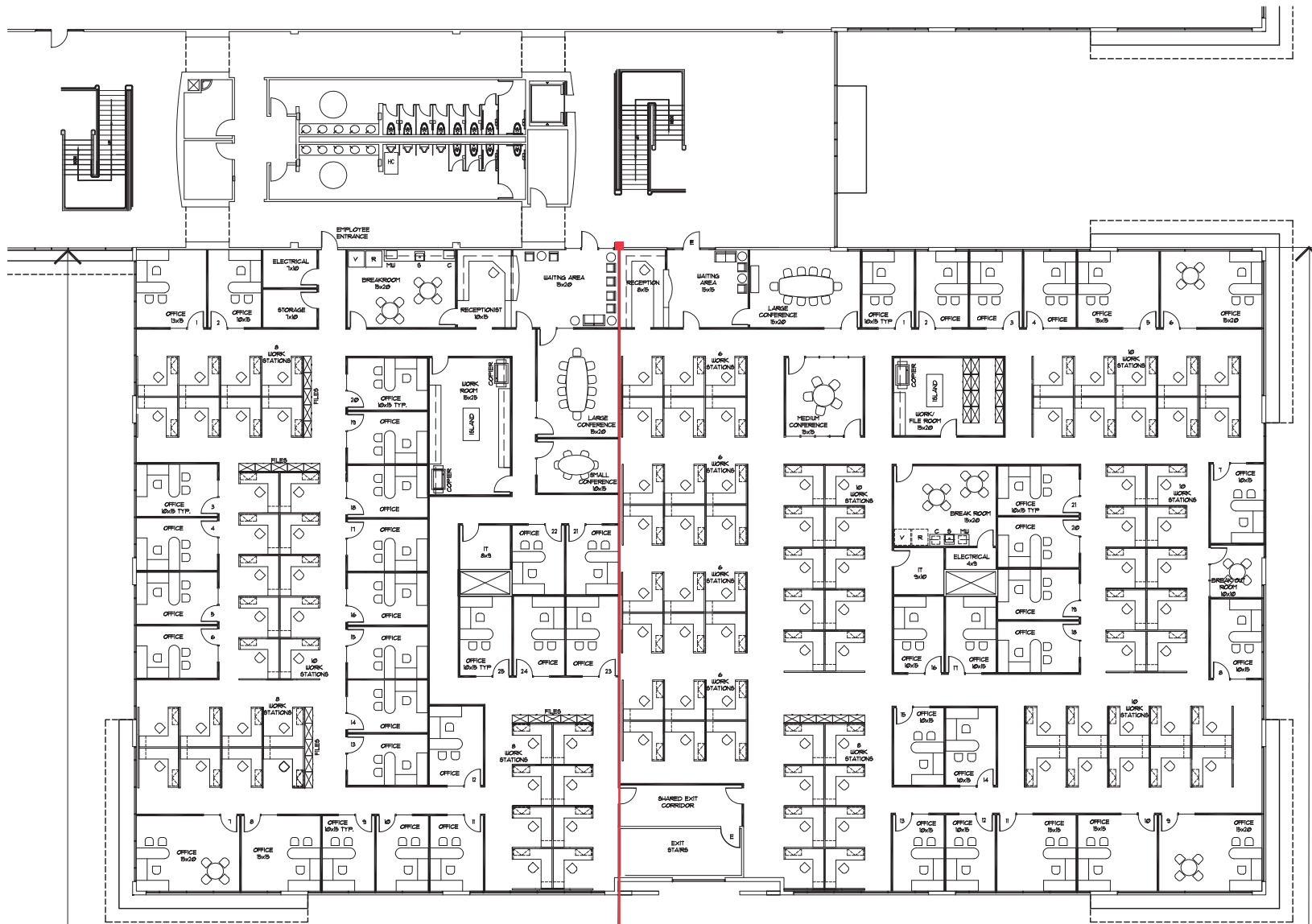
MYERS, CROW & SAVIERS, LTD.

NorthBelt Office Center V

- Premier location in deed-restricted office park
- Access via Beltway 8 & I-45
- Highly visible from Beltway 8
- Efficient floorplans
- Class "A" lobbies and restrooms
- Above-standard parking (6:1,000)

- 1 ExpressJet HQ
- 2 USPS Admin. Office
- 3 Hartford, Michael Baker Corp
- 4 Remington College
- 5 IKON Campus
- 6 ExxonMobil
- 7 Sysco Corporation Campus
- 8 FMC Technologies, The Oil & Gas Asset Clearinghouse
- 9 Paragon Center
- 10 Noble Energy
- 11 One Commerce Green
- 12 Greenspoint Technology Center

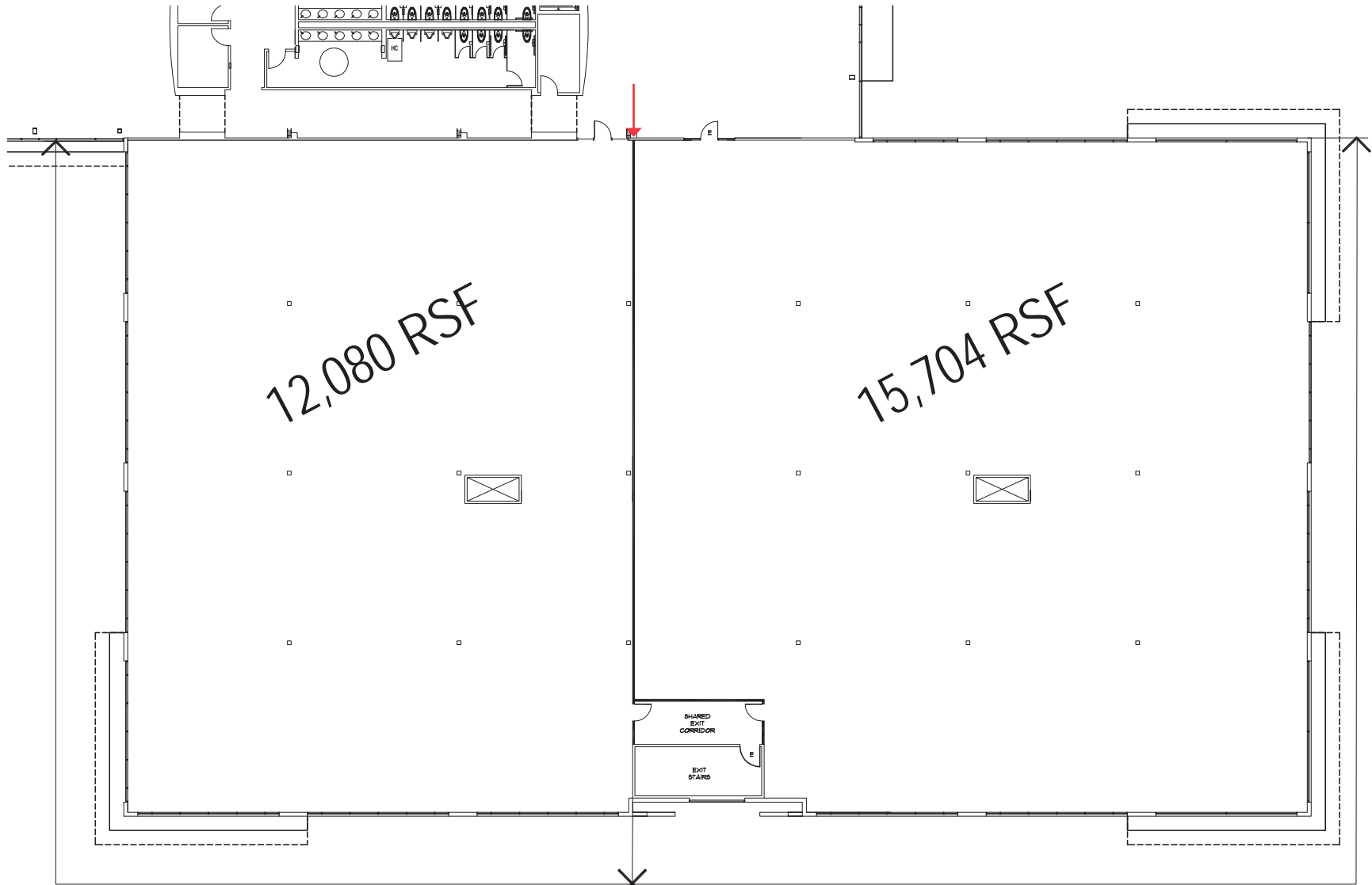




Future Tenant A - 12,080 RSF
25 Offices, 34 Workstations

Future Tenant B - 15,704 RSF
21 Offices, 72 Workstations

* Floorplans shown above are not indicative of current buildout. Space is currently in slab condition.



Possible division
of available space